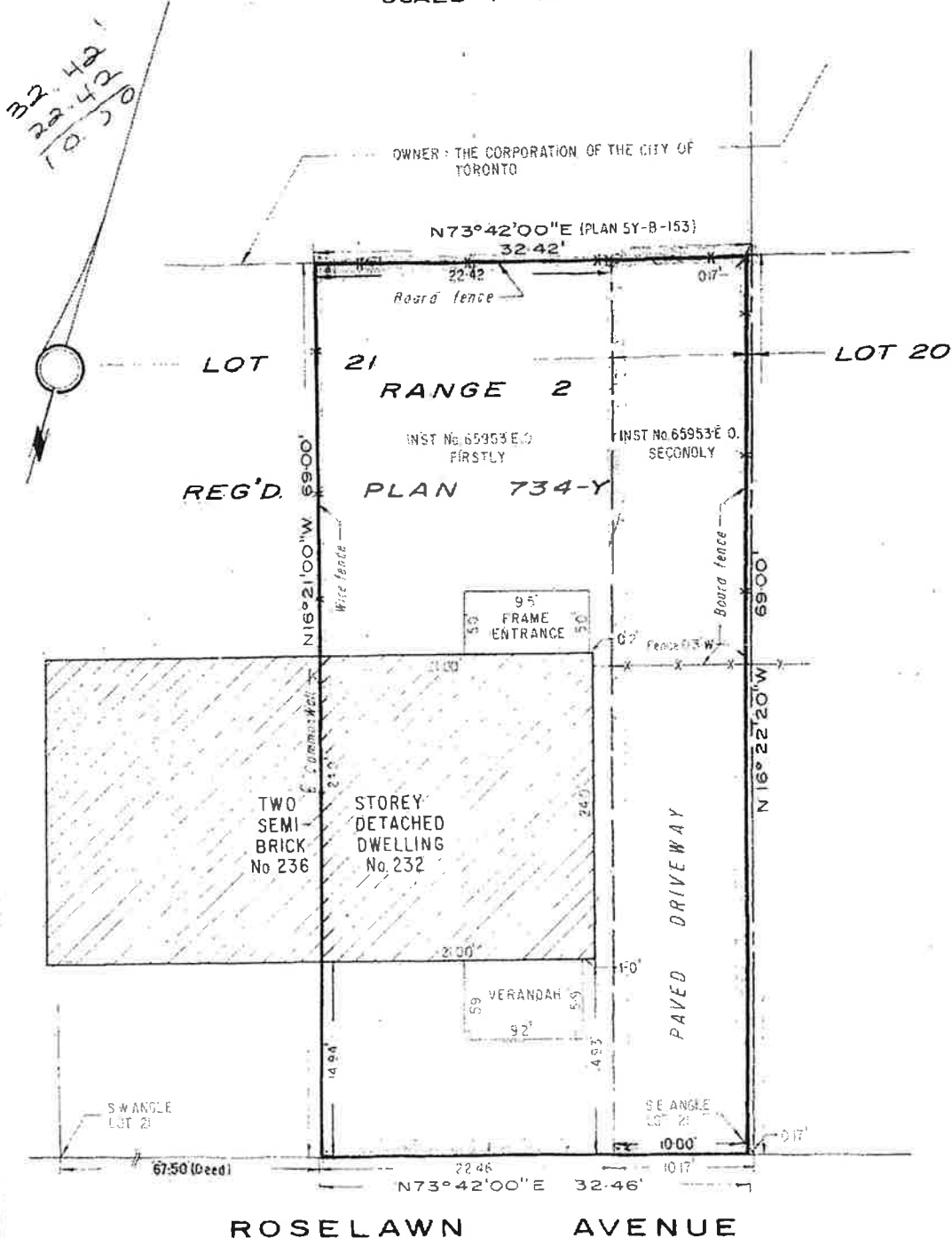


PLAN OF SURVEY OF
PART OF LOT 21, RANGE 2
REGISTERED PLAN 734-Y
CITY OF TORONTO
MUNICIPALITY OF METROPOLITAN TORONTO
SCALE: 1" = 10'

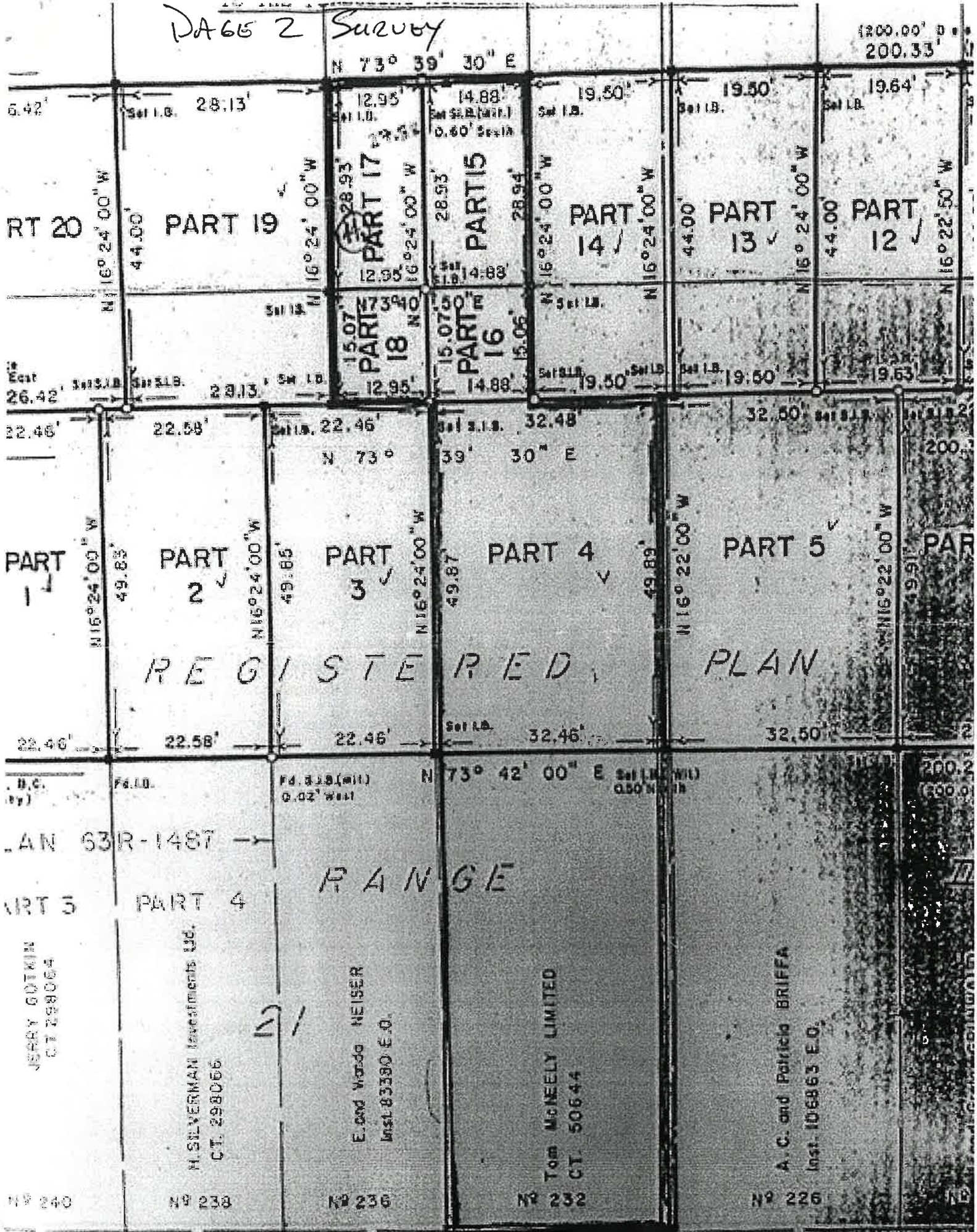


V. Raiend
 V. RAIEND
 ONTARIO LAND SURVEYOR
 176 PINEWAY BLVD.
 WILLOWDALE ONT.
 C-103-3

FEBRUARY 22, 1974

DA 65 2 Survey

1200.00' D.
200.33'



REGISTERED PLAN

RANGE

PLAN 63R-1487

JERRY GUTKIN
C.T. 298064

N SILVERMAN Investments Ltd.
C.T. 298066

E. and Vanda HEISER
Inst. 03390 E.O.

Tom McNEELY LIMITED
C.T. 50644

A. C. and Patricia BRIFFA
Inst. 106863 E.O.

Nº 240

Nº 238

Nº 236

Nº 232

Nº 226

N 73° 42' 00" E