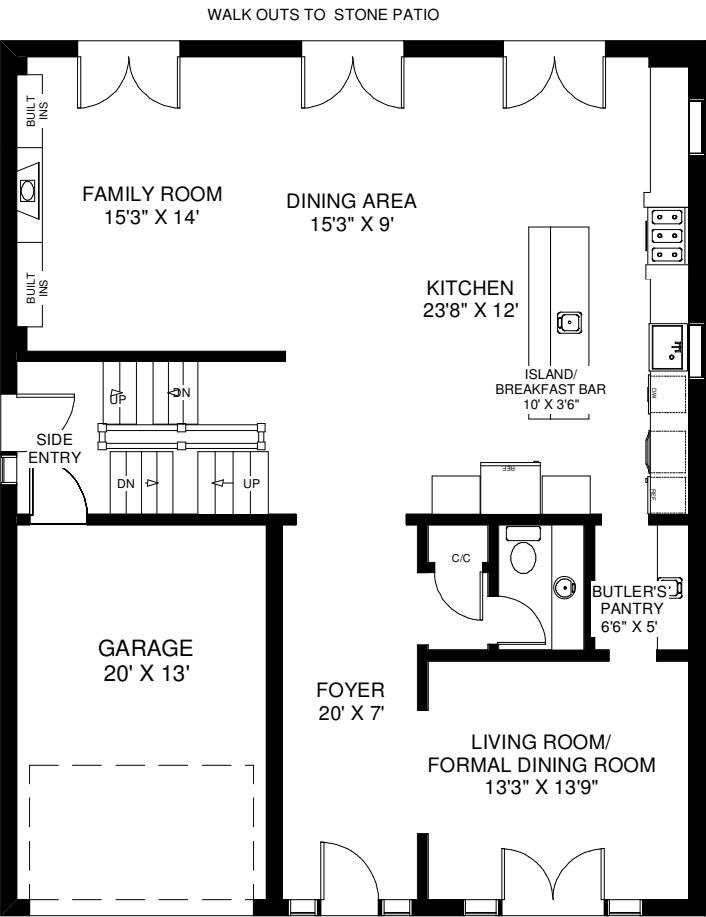


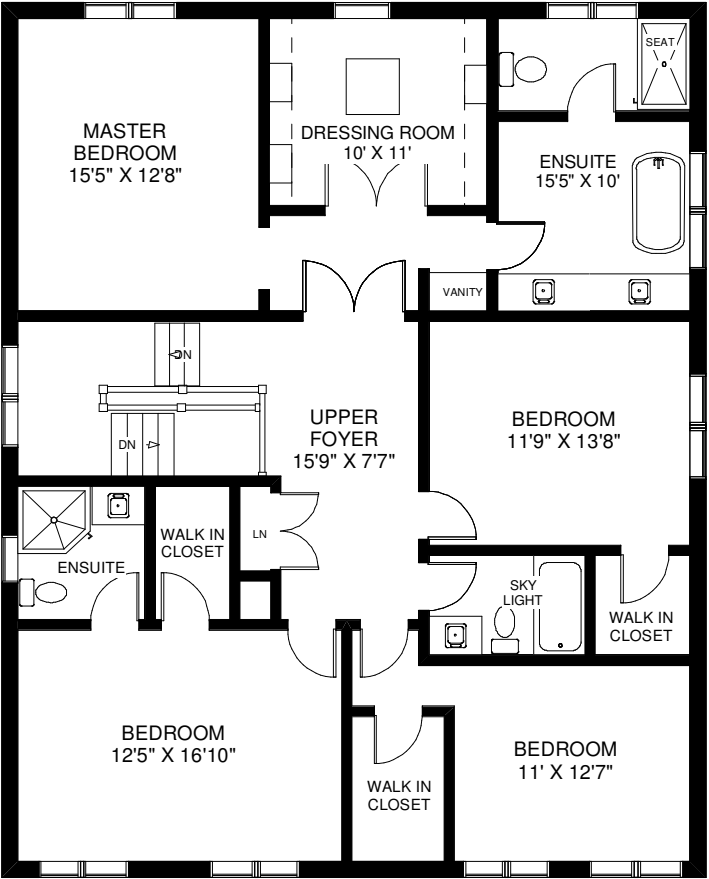
# 85 BURROWS AVENUE



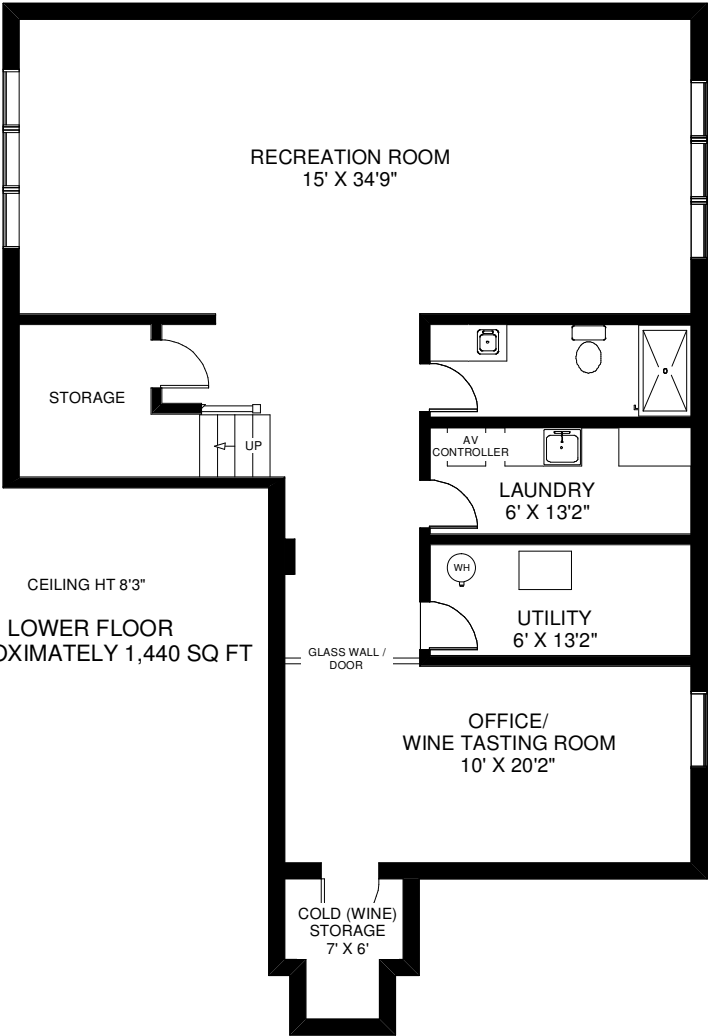
CEILING HT 10'

MAIN FLOOR  
APPROXIMATELY 1,400 SQ FT

Note: Measurements & Calculations are approximate.  
Provided as a guideline only.



CEILING HT 9'  
SECOND FLOOR  
APPROXIMATELY 1,670 SQ FT



CEILING HT 8'3"  
LOWER FLOOR  
APPROXIMATELY 1,440 SQ FT